



## Coffee Brief

**Date: 7/03/2025**

### Preparedness Levels & Alaska Fire Activity

Alaska 4 Light Initial Attack Activity

National 3 New Fires and Acres: 4 new fires for 3.2 acres / Large Fire Growth: ~ 6726.00 acres

Sources: National and AICC Situation Dashboard

### Prioritized Incident Details

ALASKA MAC GROUP PRIORITIES – DECISION 7/2/2025	
1. Initial Attack	
2. #237 - Bear Creek (CMT AK 1), FAS	
3. #223 - Himalaya Road (CMT SW 3), FAS	
4. #903 - Nenana Ridge CPX (IMT3 GFC 3), FA	
5. #218 - <u>Ninetyeight</u> (T3), MID	
6. #222 - 7 Mile Lookout (IMT3 SA Gray), TAS	
7. #901 - Ptarmigan <u>Complex</u> (T3 <u>Ad-hoc</u> ), UYD	
8. #902 - <u>Roundabout Complex</u> (IMT3 SW NNMZ), GAD	
9. #220 - <u>Twelvemile</u> Lake (IMT3 ID 1), DAS	
10. #226 - Nelchina Glacier (T3), CRS	
11. #199 - Lush (T3 Ad-hoc), TAD	
12. #309 - Birch Lake (T3 Ad-hoc), FAS	

Source: AMAC Incident Prioritization List, ICS-209s

## Resources

- Pending Crew Orders

Current Pending	Count of Request Name
CR1I - Crew, Type 1 or 2 IA	1
CR2I - Crew, Type 2 IA	8
CRW1 - Crew, Type 1	4
<b>Grand Total</b>	<b>13</b>

## Resources within the GACC *(Tactical and Committed to Incidents)*

Resources	
Smoke Jumpers	~40
LAT's	4
Scoopers	6
Single Engine Scoopers	8
AA / ASM	5
T1 Helicopter	1
T2 Helicopter	13
T3 Helicopter	18
T1 Crews	10
T2IA Crews	15
T2 Crews (Agency / Contract)	13
Suppression Module	14
Wildland Fire Module	<u>3</u>

Source: IROC Reports

## Weather Summary

High pressure building southward from its stronghold over northern Alaska will bring even hotter and drier weather to much of the Interior, as well as South Central and Copper River Basin. North of the Alaska Range, expect highs in the upper 70s to mid-80s, with RHs into the mid to lower 20 percent range with a few teens as well. South Central and Copper River will top out in the mid-70s and RHs will drop into the low 30 percent range in parts of the Copper and Susitna drainages. Across the central to eastern Interior, easterly winds gusting to 20 mph has led to Red Flag Warnings for much of the central and eastern Interior beginning this morning at 10 am and is now expected to last into Thursday for many of those areas. Tomorrow, the winds shift farther to the west, and parts of the western Interior also get caught up in the Red Flag conditions.

With the stability of the ridge, there is not as much thunderstorm activity expected for the next few days, but there is still some potential for storms in the southeastern Interior, edging northwestward into the Koyukuk drainage. There will also be a few strikes in other parts of the Interior, and with dry fuels, it is likely that there is a high ignition rate for strikes in most Interior areas. On Thursday and Friday, activity shifts westward.

Southwest and southeast Alaska will begin to see a drying trend later today for the end of the workweek, until the next storm slides in under the Alaska Peninsula to bring more rain to coastal areas this weekend.

The pattern in the medium range remains consistent with hot and dry weather in the Interior and slightly cooler but still warm and mostly dry weather in South Central and the Copper River Basin. Isolated to scattered thunderstorms in the Interior will fire off in the afternoons. Winds will be light to breezy out of the east across the state. This pattern will persist until a more powerful low in the North Pacific moves towards the state over the weekend and into early next week.

Source: Alaska 7-Day Outlook

## Fuels/Fire Potential

Critically dry fuels are combining with gusty Easterly winds today for a very active day for fire ignition and spread potential. Surface fuels are extremely dry, and upper and mid duff layers in the central Interior are pushing into Very High levels of concern on a broader footprint. ISI (Initial Spread Index) values for today are topping the Extreme category, indicating large fire growth is likely with crowning and rates of spread over 1 mph. In addition, poor nighttime RH recovery means that fires will continue to be very active overnight.

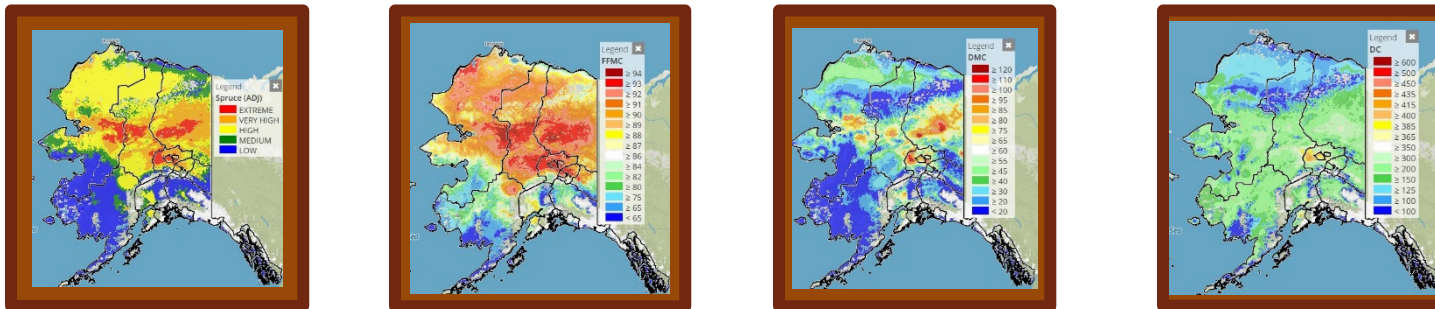
Even with limited lightning in the forecast, there is a high likelihood for new starts and holdover fires to show themselves in the central and eastern Interior again today. Holdovers suspected to have been started up to twelve days prior have been spotted in the last few days. Low RHs in the forecast through the end of the week will allow these yet unseen fires to jump up and run very quickly.

Duff fuels are a mixed bag as some areas received heavy rain in the last week. However, most areas received less than half an inch of rain and are already at the same dryness levels as prior to those rains. With the hottest and driest days of the year, drying of duff fuels has accelerated, with BUI values increasing by as much as 6-7 points per day. In much of the central and northeastern Interior, the deeper duff layers are also ready to engage, bringing the entire fuel column into play.

With the holiday weekend, human ignitions become a much bigger concern. Though firework sales and campfires have been restricted in many areas, there is still plenty of opportunity for human ignitions, particularly along the road corridors and population centers, to cause an additional drain on resources.

Source: Alaska 7-Day Outlook

## Fuels Status [Alaska Fire and Fuels Map](#)




For additional fuels information visit <https://akff.mesowest.org/>

Sources: AICC Predictive Services – Fuels/Fire Danger web page, Alaska Fire & Fuels web page

## Notable from around the State and additional links for information

Link to the Risk Management Assistance Dashboard Intel Matrix for AK is now available at <https://arcg.is/10DD43>

Links to SharePoint IMT/Crew Tracking Spreadsheets:

Crew Glidepath -  [2025 Crew Tracking Report.xlsx](#)

IMT Assignments -  [AICC IMT Tracking Report - ConditionalFormatting\\_updatedv3.xlsx](#)

The Coffee Brief is posted at PLs 4 and 5 only.

